

Подборка текстов, которые можно использовать для обучения работе с
несплошными текстами.

Тексты взяты из проекта «Project Achievement: Reading – Book A».

Балыкина О.В.

Учитель английского языка

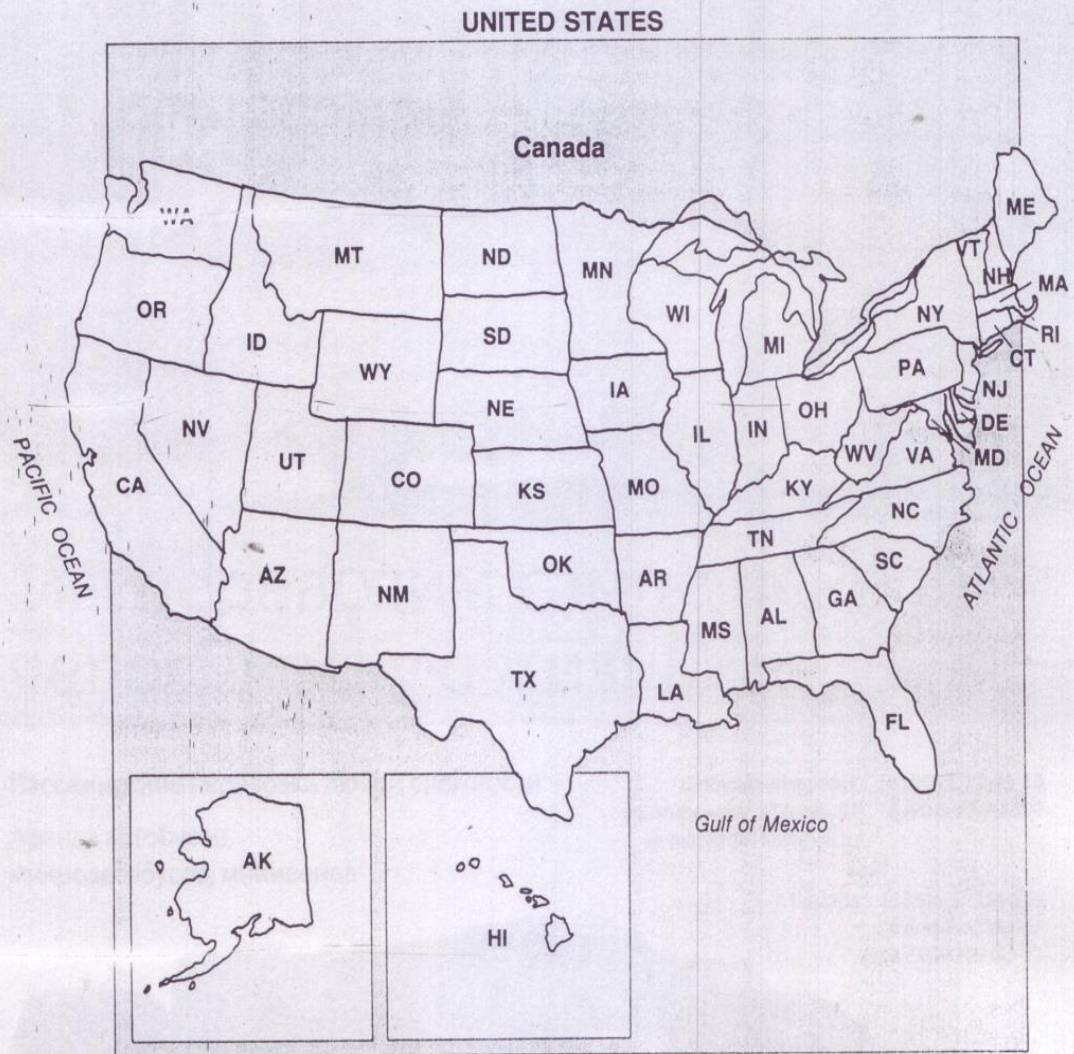
ГБОУ СОШ № 1

г.о. Чапаевск

Where Presidents Come From

Does a person from Ohio or Virginia have a better chance of living in the White House than anyone else? It seems that way. Eight out of 40 U.S. Presidents came from Ohio. Eight came from Virginia. William Henry Harrison, the ninth U.S. President, had the best chance of all. Why? He was born in Virginia and then lived in Ohio.

Here is a map of the United States. You will see that Virginia and Ohio are not too far away from each other. New York, Massachusetts, and California are worth noting, too. They each have sent at least three of their native sons to the White House.



Maps are flat drawings of Earth or parts of it. The map on the left shows the shapes and sizes of the 50 states. Like most U.S. maps, it abbreviates the names of the states. Use the map to answer the questions below.

Choose the best answer.

1. President Lyndon Johnson came from the largest state on the Gulf of Mexico. He was from ____.
- a. Wyoming
 - b. Montana
 - c. Texas
 - d. New Mexico

Check your answer. The state on the Gulf of Mexico with the largest land area has the abbreviation TX. The answer is c.

2. President Jimmy Carter is from Georgia. Which state is below Georgia on the map?
- a. Alabama
 - b. South Carolina
 - c. Tennessee
 - d. Florida

3. President Harry Truman was from a state surrounded by Illinois and seven other states. He was from ____.
- a. Iowa
 - b. Wisconsin
 - c. Missouri
 - d. Indiana

4. Which area of the United States has more states?
- a. near the Atlantic Ocean
 - b. near the Pacific Ocean
 - c. near Washington
 - d. near the Gulf of Mexico

5. Which of these states is closest to Canada?
- a. Wyoming
 - b. Oregon
 - c. North Dakota
 - d. South Dakota

Answer Key: 1c, 2d, 3c, 4a, 5c

Meet Stevie Wonder

Up close, Stevie Wonder doesn't act like someone who is totally blind. "I never knew what it was like to see. So being blind is no different from seeing," Stevie says. Like any person who can see, he goes to the movies and watches TV. (Friends tell him what's happening on the screen.) He turns the lights on and off when he goes into the bathroom. He has even flown a plane.

Stevie opens the first show in the November Rock concerts on Tuesday. Look at the November calendar below to find out when Stevie and other rock stars will appear.

NOVEMBER ROCK 1983						
SUN.	MON.	TUES.	WED.	THURS.	FRI.	SAT.
		1 <i>STEVIE WONDER</i> 2 Shows Nightly: 8:00, 10:00	2	3	4	5 <i>Tonight Only</i> <i>ABBA</i> All Tickets \$10.00
6	7	8	9	10	11	12
13	14	15	16	17	18	19 <i>BEE GEES</i> 8:00, 10:00 \$8.00
20	21	22	23 <i>Special Holiday Treat</i> <i>LINDA RONSTADT</i> Tickets: \$6, \$8, \$10	24	25	26
27 <i>Today at Noon</i> <i>DIANA ROSS</i> (sold out)	28	29	30			

A calendar is a kind of table because the dates and days of the week are arranged in columns and rows. A column goes up and down. A row goes from side to side. All the dates in one column fall on the same day of the week. All the dates in one row appear in the same week.

Use the November Rock calendar to answer the questions below.

Choose the best answer.

1. On which day of every week is there no show?
 - a. Sunday
 - b. Monday
 - c. Thursday
 - d. Friday

Check your answer. The column under MON. has no shows listed. The answer is b.

2. On what date is the Diana Ross Sunday show?
 - a. the 6th
 - b. the 13th
 - c. the 20th
 - d. the 27th
3. If you want to go to a Saturday night show, whom can you see?
 - a. The Bee Gees or Diana Ross
 - b. Abba or Stevie Wonder
 - c. Abba or The Bee Gees
 - d. The Bee Gees or Linda Ronstadt
4. Thanksgiving Day is always on the fourth Thursday of November. Which show can you see on Thanksgiving Day?
 - a. Linda Ronstadt
 - b. The Bee Gees
 - c. Abba
 - d. Diana Ross
5. Which week has the most shows?
 - a. Nov. 6 to 12
 - b. Nov. 13 to 19
 - c. Nov. 20 to 26
 - d. Nov. 27 to Dec. 3

Answer Key: 1b, 2d, 3c, 4a, 5c

Belize Is Born

The world has been changing a lot. Since 1975, more than a dozen new nations have appeared. One of the newest is Belize, a tiny nation near Mexico. The British had ruled Belize for 300 years. But by 1981, the people of Belize were ready to rule themselves. One day in September the British flag came down. The red, white, and blue flag of Belize went up. Belize was independent at last.

Find out more about new nations by looking at the table below. Each of these nations was once ruled by another nation.

Nation	Number of People	Languages Spoken	Date of Independence
Angola	6,600,000	Portuguese, Bantu	Nov. 11, 1975
Belize	150,000	English, Spanish	Sept. 21, 1981
Djibouti	386,000	Somali, French	June 27, 1977
Mozambique	9,680,000	Portuguese	June 25, 1975
Surinam	404,000	Dutch, Creole	Nov. 25, 1975
Tuvalu	7,000	Tuvaluan, English	Oct. 1, 1978

A table is arranged in columns and rows. A column goes up and down. Each column has a title. The title tells what kinds of facts are in the column. For example, all the words in the first column are nations.

A row in a table goes across, from side to side. Each row has facts about the nation in the first column. For example, one fact about Angola is that it has 6,600,000 people.

Use the table about new nations to answer the questions below.

Choose the best answer.

1. Which nation on the table has nearly ten million people?

- a. Angola
- b. Djibouti
- c. Mozambique
- d. Surinam

Check your answer. Look down the column that shows the number of people. Find the number that is almost ten million and find the nation in the same row. The answer is c.

2. Which nation was the last to become independent?

- a. Tuvalu
- b. Belize
- c. Djibouti
- d. Mozambique

3. Which nation has the fewest people?

- a. Belize
- b. Angola
- c. Surinam
- d. Tuvalu

4. Which two nations became independent in the same month of the same year?

- a. Angola and Tuvalu
- b. Angola and Surinam
- c. Tuvalu and Belize
- d. Mozambique and Surinam

5. Which two nations were probably ruled by English-speaking people?

- a. Belize and Tuvalu
- b. Tuvalu and Surinam
- c. Angola and Mozambique
- d. Djibouti and Angola

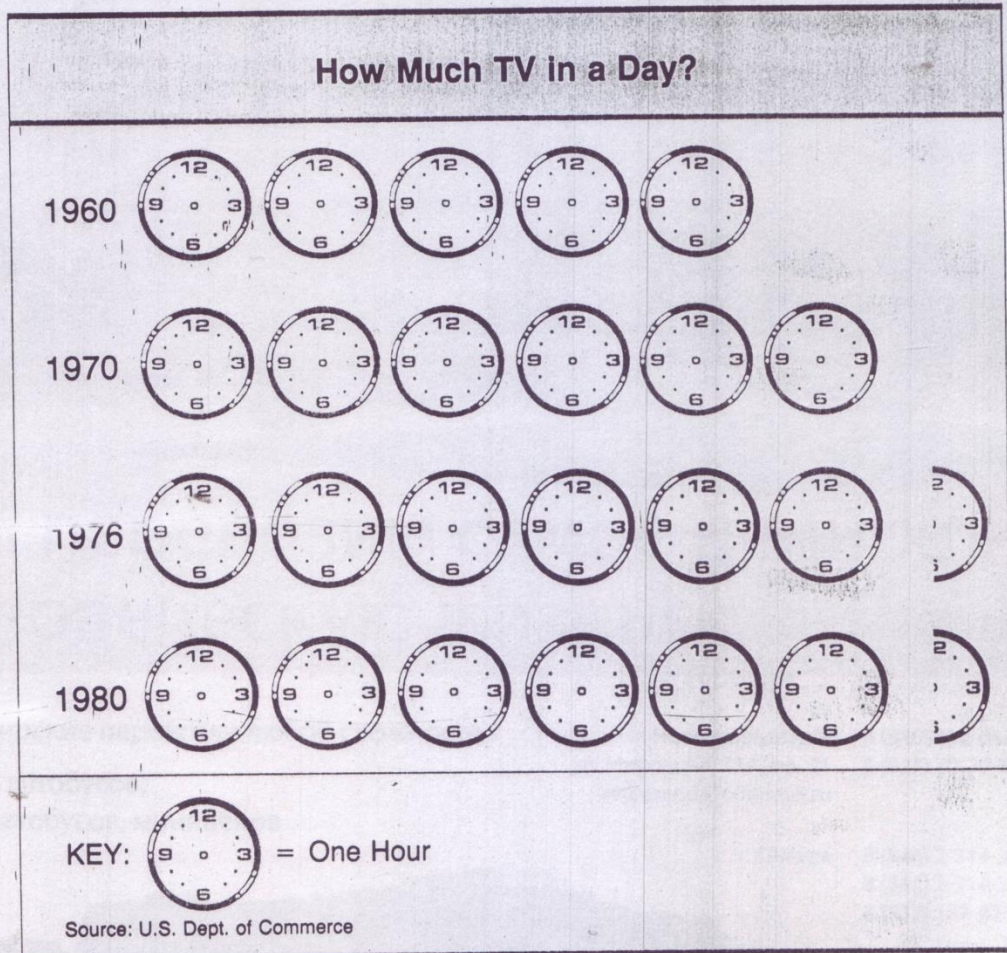
Answer Key: 1c, 2b, 3d, 4b, 5a

How Much Time for TV?

Once upon a time, there was no television. That wasn't because no one had tried to invent it. Scientists had worked on the idea starting in the late 1800's. Many years passed before television worked well.

In the 1940's, television caught on. It was a hit from the beginning. Soon the movie business, the restaurant business, and even the jukebox business went down. Americans stayed home to watch television. How much watching do people do? The graph below can help you decide.

This graph is called a pictograph. It shows the average number of hours a day that people have watched television in different years.



A pictograph uses pictures, or symbols, to show information. In the graph at the left, the symbol is a clock. Find the key at the bottom. The key tells you that each clock on the graph equals one hour of television watching. Half a clock equals one-half hour of watching.

To read the graph, count the number of clocks in the row for each year. A row runs across, from side to side. Use the graph to answer the questions below.

Choose the best answer.

1. The average number of hours spent watching TV in 1960 was ____.
 - a. 5 hours
 - b. $5\frac{1}{2}$ hours
 - c. 6 hours
 - d. $6\frac{1}{2}$ hours

Check your answer. There are five clocks in the row beside 1960. The answer is a.

2. People spent an average of six hours a day watching TV in ____.
 - a. 1960
 - b. 1970
 - c. 1976
 - d. 1980
3. From 1970 to 1976, television watching ____.
 - a. didn't change
 - b. went up by one-half hour
 - c. went up by one hour
 - d. went down by one-half hour
4. Television watching went up the most from ____.
 - a. 1960 to 1970
 - b. 1970 to 1976
 - c. 1970 to 1980
 - d. 1976 to 1980
5. In which two years did the number of hours stay the same?
 - a. 1960 and 1970
 - b. 1970 and 1976
 - c. 1970 and 1980
 - d. 1976 and 1980

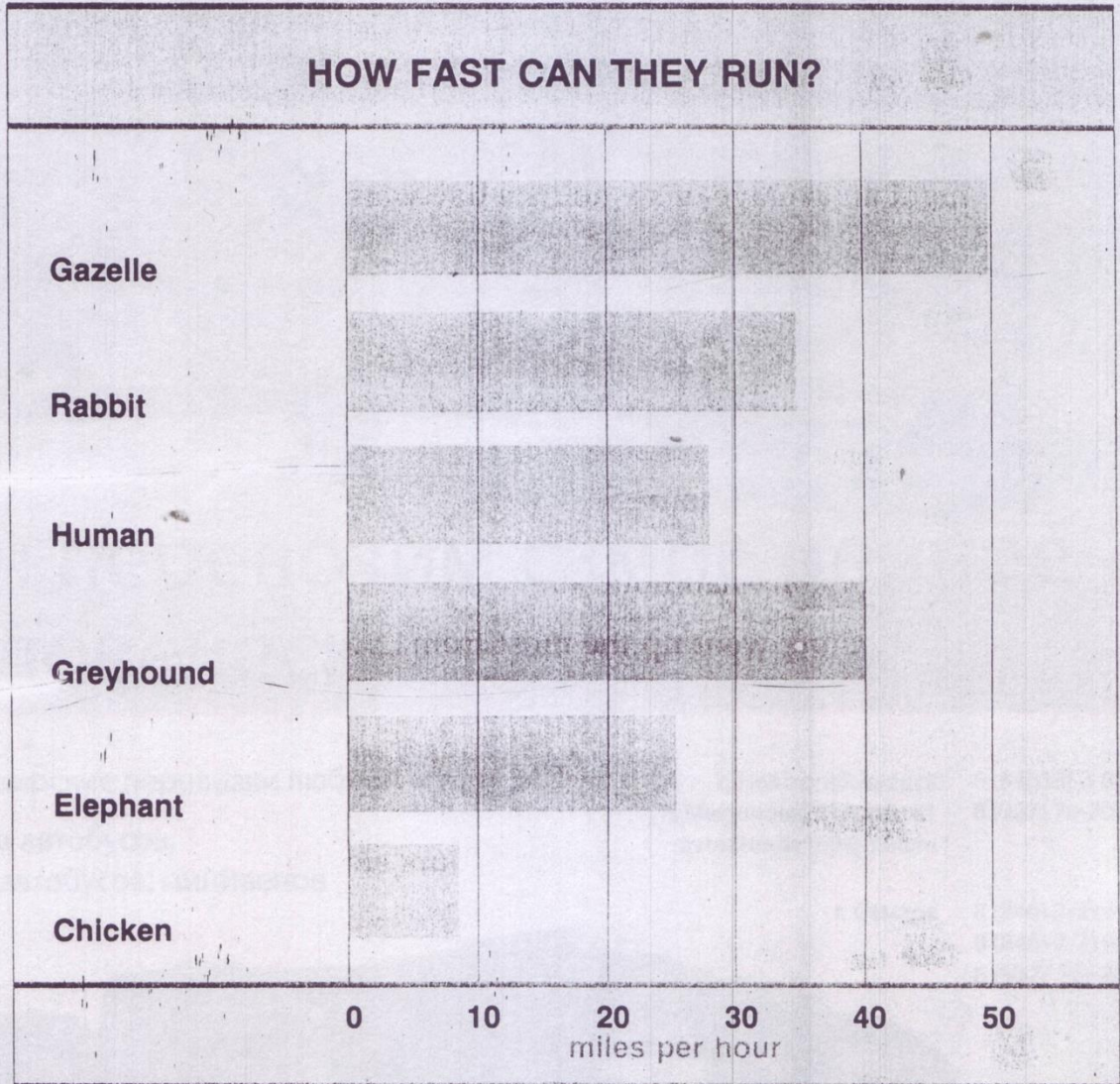
Answer Key: 1a, 2b, 3b, 4a, 5d

The Slowest and the Fastest

The state of Florida was once almost gobbled up by snails. They were giant snails from Africa. A visitor took some to Florida, where they spread quickly. Some of the snails were as big as a person's hand. They ate the leaves on trees and other plants. They had to be stopped, and they were. Poison killed thousands of the snails, and Florida was saved.

Catching a snail should be easier than catching any other animal. The snail is the slowest of all land animals. Its top speed is 55 yards per hour. At this speed it would take the snail about 32 hours to travel one mile. A snail only goes that fast when it's very hungry.

The bar graph below shows some other top speeds.



A bar graph has bars of different lengths, instead of pictures. This kind of graph makes it easy to compare several things quickly. To read the graph, notice where each bar ends. Then find the closest number at the bottom of the graph.

Use the bar graph about running speeds to answer the questions.

Choose the best answer.

1. What is the top speed of a rabbit?

- a. 30 miles per hour
- b. 35 miles per hour
- c. 40 miles per hour
- d. 50 miles per hour

Check your answer. The bar for the rabbit is halfway between 30 and 40, or 35. The answer is **b**.

2. Fifty miles per hour is the top speed for ____.

- a. a rabbit
- b. a human
- c. a greyhound
- d. a gazelle

3. What is the difference in running speed between a greyhound and a gazelle?

- a. 5 miles per hour
- b. 10 miles per hour
- c. 15 miles per hour
- d. 20 miles per hour

4. The closest to an elephant in running speed is ____.

- a. a human
- b. a greyhound
- c. a chicken
- d. a rabbit

5. A rabbit and greyhound can both run faster than ____.

- a. 50 miles per hour
- b. 45 miles per hour
- c. 40 miles per hour
- d. 30 miles per hour

Answer Key: 1b, 2d, 3b, 4a, 5d

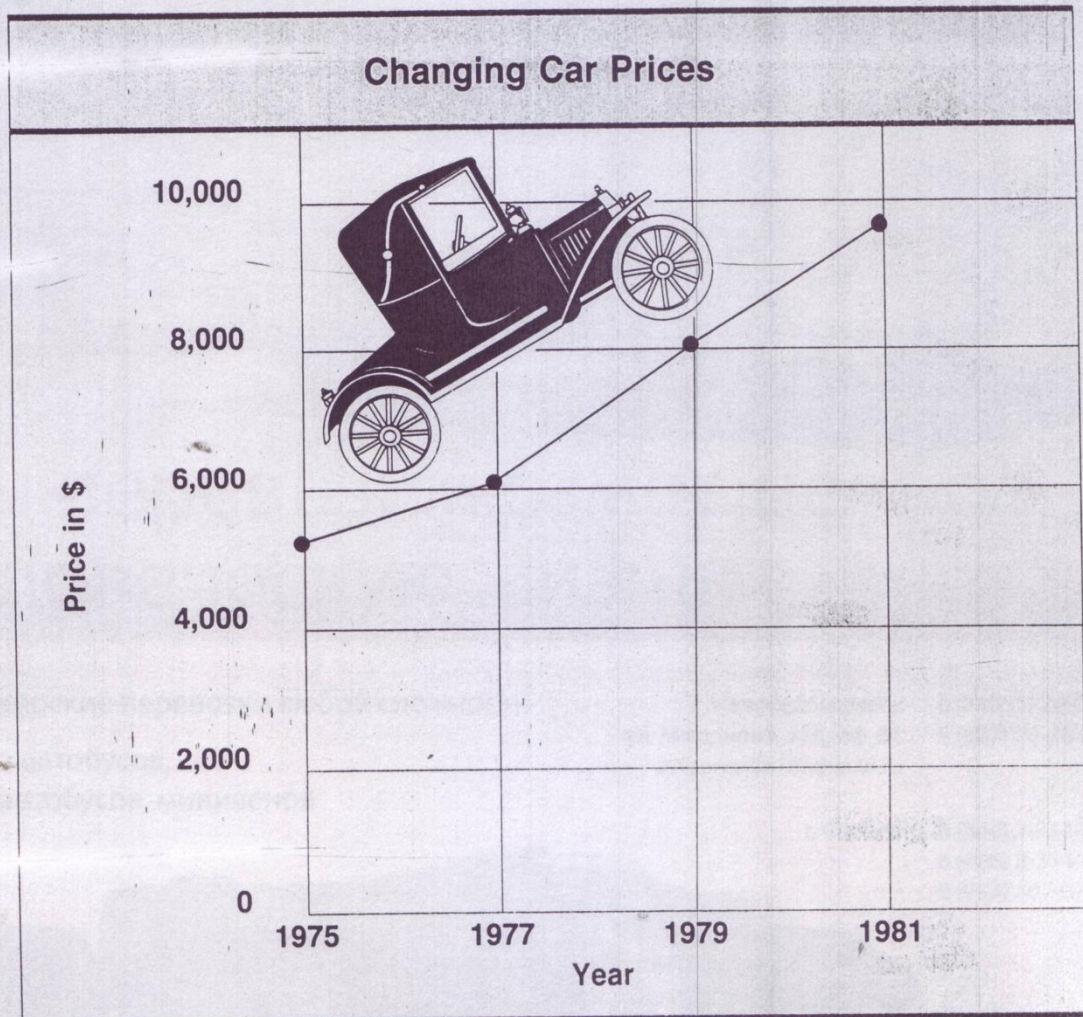
The Tin Lizzie

It shook, rattled, and groaned. It wasn't pretty. It looked like a black box sitting on high, skinny wheels. But it could go anywhere, and it was cheap.

What was it? It was Henry Ford's Model-T car—better known as the Tin Lizzie. This car was the most popular of all for nearly 20 years. It changed the American way of life forever.

Model T's were sold as fast as they were made. Eleven thousand were sold in 1908. They cost \$850 each. Of course, you can't buy a new car for \$850 any longer. The prices of new cars keep changing.

The line graph below shows how the average prices of American cars have been changing.



A line graph shows how something has changed. This kind of graph uses a simple line to show changes. If the line goes up, that means things have gone up in some way. If the line goes down, then something has gone down.

Suppose you want to find the average price of cars for 1977. Find 1977 at the bottom of the graph. Find the dot over the year. Then find the price across from the dot.

Use the line graph to answer the questions below.

Choose the best answer.

1. What was the average price of a car in 1979?
 - a. \$4,000
 - b. \$6,000
 - c. \$8,000
 - d. \$10,000

Check your answer. The dot above 1979 is across from the number 8,000. The answer is c.

2. What does the line graph show about car prices?
 - a. They have been going up.
 - b. They have been going down.
 - c. They have not changed.
 - d. They have been cut in half.
3. In what year did cars cost more than \$4,000 but less than \$6,000?
 - a. 1975
 - b. 1977
 - c. 1979
 - d. 1981
4. Suppose you were looking for a new car in 1981. What would the average price have been?
 - a. less than \$6,000
 - b. less than \$8,000
 - c. more than \$8,000
 - d. more than \$10,000
5. How did the average price of cars change from 1977 to 1979?
 - a. It went up by \$1,000.
 - b. It went up by \$2,000.
 - c. It went down by \$1,000.
 - d. It went down by \$2,000.

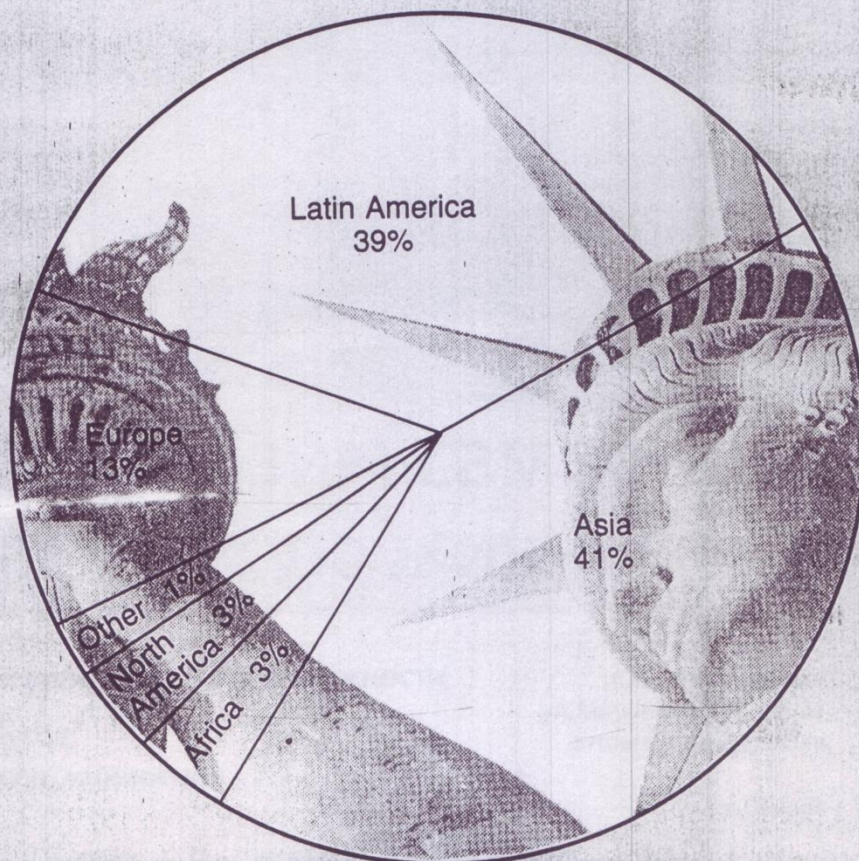
Answer Key: 1c, 2a, 3a, 4c, 5b

The New Americans

Rita and Maria Rivera are sisters. They used to live in Cuba. They left Cuba on a crowded boat to come to the United States. Tom Nguyen also left his country, Vietnam, to come to the United States. Rita, Maria, and Tom are American immigrants. They have made new homes in their new land. More than 400,000 immigrants enter the U.S. in a year. Most come to find more freedom and a better life for the future.

Where do most of the immigrants come from? Look at the pie graph below. Notice which parts of the world are the bigger pieces of the pie. Cuba is in Latin America. Vietnam is in Asia.

WHERE DO IMMIGRANTS COME FROM?



Source: Population Reference Bureau,
Immigration and Naturalization Service

You can divide a pie into pieces. That's also the idea of a pie graph, or circle graph. A pie graph shows how the whole amount of something is divided into parts.

The pie graph at the left has a number in each part. These numbers are percentages, or parts of 100 percent. All the numbers add up to 100%—all the immigrants who come to the U.S. Use the graph to answer the questions below.

Choose the best answer.

1. The graph shows that most immigrants to the U.S. come from ____.
 - a. Latin America
 - b. Asia
 - c. Europe
 - d. North America

Check your answer. The biggest part of the circle is Asia. The answer is b.

2. Africa has only a small part of the circle because ____.
 - a. none of the immigrants come from there
 - b. few of the immigrants come from there
 - c. many of the immigrants come from there
 - d. all of the immigrants come from there
3. More immigrants come to the U.S. from Europe than from ____.
 - a. Africa
 - b. Latin America
 - c. Asia
 - d. the rest of the world
4. About the same number of immigrants come from ____.
 - a. Europe and North America
 - b. Europe and Asia
 - c. Africa and North America
 - d. North America and Latin America
5. What percent of all immigrants are from Latin America and Asia?
 - a. 39%
 - b. 41%
 - c. 50%
 - d. 80%

Answer Key: 1b, 2b, 3a, 4c, 5d